

ROBY PARK PRIMARY SCHOOL

WEEKLY NEWSLETTER

WELCOME BACK TO SCHOOL

We're thrilled to open our doors once again and welcome all our wonderful pupils, families, and staff to a brand new academic year at Roby Park. The classrooms are buzzing with excitement, and the playgrounds are echoing with laughter—it's clear we're off to a fantastic start!

This year promises to be one filled with enrichment, growth, and unforgettable memories. From inspiring lessons and creative projects to school trips and special events, we're committed to nurturing every child's curiosity, confidence, and joy in learning.

Let's make this year one to remember—a year of discovery, friendship, and success. Here's to new beginnings and the adventures ahead!

HEALTHY SNACKS

As part of our ongoing commitment to promoting healthy habits and supporting children's wellbeing, we kindly ask that all snacks brought into school are either fresh fruit or a plain cereal bar.

To ensure consistency and safety across the school community, please avoid sending in:

- Chocolate-based cereal bars
- Biscuit packs
- Nuts (due to allergy risks)
- Pastries
- Crisps



These items are often high in sugar, salt, and saturated fats, which can affect children's energy levels, concentration, and overall health. By encouraging nutritious choices, we aim to support better focus in class and foster lifelong healthy eating habits.

We truly appreciate your continued support in helping us create a positive and health-conscious environment for all our pupils.

FOREST SCHOOL SESSIONS



To help children enjoy their outdoor learning safely and comfortably, please ensure they come to school dressed for the weather, wearing their own clothes that may get wet and dirty. This includes:

- A waterproof coat
- A hat
- Wellies that fit and are in school



Upcoming Forest School Dates – Autumn Term 1

- Fri 5th Sept – Y1 & Y2
- Fri 12th Sept – Y3 & Y4
- Fri 19th Sept – Y5 & Y6
- Fri 3rd Oct – Y1 & Y2
- Fri 10th Oct – Y3 & Y4
- Fri 17th Oct – Y5 & Y6
- Fri 24th Oct – Y1 & Y2

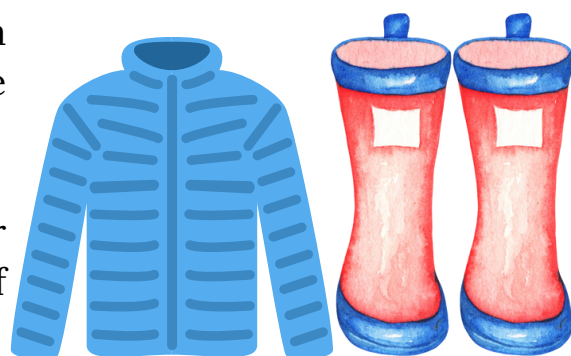
Please note: Dates are subject to change. Keep an eye on Arbor for the latest updates.

Let's get ready for muddy boots, fresh air, and lots of outdoor adventure! 🌧️🦊🍂

WELLIES & COATS REMINDER

Please ensure your child comes to school with a raincoat so they can enjoy playtime whatever the weather.

To keep field play going through the wetter months, please make sure your child has a pair of wellies that fit.



END OF THE DAY PROCEDURES REMINDER

To ensure all children are safely handed over at the end of the school day, we kindly ask for your support with the following procedures:

- Please stand well back, in line with the gazebo, to allow staff clear visibility and space to dismiss children safely.
- Do not use the small gate onto the playground to enter or exit, as this is the route used by classes during dismissal.
- Exit the playground via the double gates by the main entrance.
- Please do not take your child from the line or collect their belongings early, as this disrupts the flow of dismissal and prevents staff from confirming who each child is leaving with—this poses a safeguarding risk.
- Once you have collected your child, we ask that you move away promptly to help keep the area clear and safe for others.

Classes line up across the playground, starting with Year 6 closest to the MUGA, moving down to Year 1.

Thank you for your continued support in helping us maintain a safe and orderly end to the school day.

EXTRA-CURRICULAR CLUBS

We're excited to announce that our Autumn Term 1 extra-curricular clubs are now available to book via Arbor—subject to remaining availability. These clubs offer a fantastic opportunity for pupils to explore new interests, build skills, and enrich their learning beyond the classroom.

We kindly ask parents and carers to speak with their children about which clubs they'd like to join, as regular attendance is expected to ensure they gain the full benefit of the experience.

Please note: clubs are designed to enhance the curriculum and support personal development—they are not intended as childcare provision.

TRIPS & EVENT PAYMENTS ON ARBOR

Please could all Year 6 parents ensure that their London 2026 trip balances are up to date. As of 30th August, the outstanding amount should be £144. Additionally, we kindly ask Year 3 parents of children attending PGL to check their balances. There should only be two instalments of £22 remaining—one for September and one for October.

We're pleased to let you know that many of the events and trips for the entire Autumn Term are now available to view and pay for via Arbor.

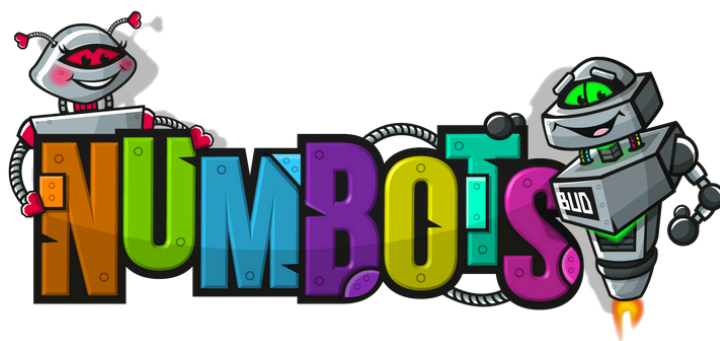
By making these available early, we hope this helps families plan ahead and manage payments more easily over the coming weeks.

JUNIOR DUKES PASSWORD



Over the coming days, you will receive a username (email address) and password for the Junior Dukes portal. Please make a note of these details and keep them safe. Your child will need them to log in, complete their challenges, and upload evidence of their achievements. We're excited to see all the wonderful things they'll accomplish!

HOME LEARNING WORKSHOPS



We're excited to invite all parents to our upcoming Home Learning Workshops on Monday 22nd September. This is a fantastic opportunity to explore and trial some of the digital apps and tools we use to support learning at home.

During the session, you'll:

- Get hands-on experience with the apps your child uses for home learning
- Discover practical tips to support your child's progress
- Learn how small, consistent support at home can make a big difference

Why it matters: Research shows that parental engagement can boost a child's learning by an average of four additional months of progress per year. In fact, children whose parents actively support their education tend to perform better academically, show greater confidence, and develop stronger learning habits².

Your involvement—whether it's helping with homework, encouraging reading, or simply showing interest—can have a lasting impact.

We hope to see you there and work together to make home learning meaningful and effective for every child.

CALENDAR DATES

Calendar dates for all upcoming trips and events can be found on your calendar on the Arbor app. By clicking 'next day', you can see upcoming events.

