

ROBY PARK PLAY ASSEMBLIES



Pallets, Panels,
Crates & Guttering

PLAY CHARTER

We have the responsibility to make sure everyone enjoys playtime so we will:

BE KIND

- Share the resources
- Know how to play kindly
- Listen to each other



BE RESPECTFUL

- Make our own choices
- Look after each other, our school and equipment
- Treat everyone how we like to be treated



BE AWARE

- Try to sort out problems ourselves in a kind, understanding manner before seeking help.
- Make sure everyone is safe by managing risks
- Take responsibility for our play area and help tidy up



...HAVE FUN





15.5.25

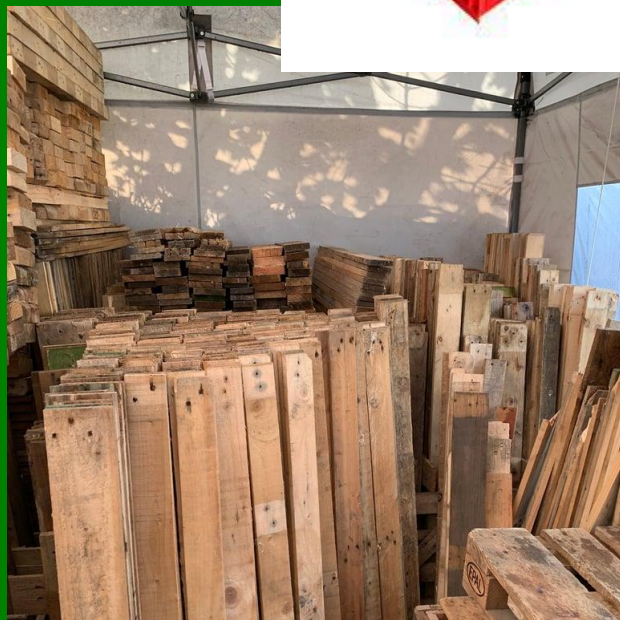
- Children tidying up better, working together.
- Children and staff are happier.
- Children mixing well with children from other year groups.
- The playground has a positive vibe.



Celebrate



Pallets, Panels, Crates & Guttering



Inform



How can we use it?

Building forts, house,
dens and structures,

Build bridges

Build towers

Make mega-structures

Water play

Obstacle course

Balancing activities

Innovate

How can we not use it?

No placing pallets vertically

No playing games in construction zone

Towers no higher than shoulder height
on grass

No throwing

No hitting

No snatching

No inappropriate references

Do not destroy others structures

Do not climb towers

No ball games in this area

Do not jump off anything in
construction area





What rules do we need to agree to when playing with....?

- Pallets don't get placed vertically (on their side)
- No playing in the construction area - it is not a space for play!
- A stack height limit of belly button on tarmac or shoulder height on soft grass.
- Avoid standing on a stack of crates over 1.0m off the ground on 1.5m max. on soft grass/mud.
- Only lift single crates above head height, not multiples of crates, to prevent head-bump hazard.
- Riding in dragged crates is fine on grass but beware of speed.
- Two people to carry – no dragging.
- Don't swing loose pieces around, don't throw

Negotiate





- When 'HAPPY' plays, we all tidy away together. We have 4 minutes to clear up!
- Everybody is responsible for tidying away all equipment whether you played with it or not.
- Reading books back in the Reading Shed and doors closed.
- All large loose parts back to their designated area.
- Scooters and bikes back to the fence lines.
- Role play items returned to the shed.
- Sandpit to be emptied of resources.
- Basketballs and footballs put back in bags inside the shed.

Tidying Away





- Items returned to their homes inside the large loose part store:
 - Tuff trays and stands
 - Small world trays with lids on
 - Constructa den building trolley
 - Sports equipment trolley – balls, parachutes and space hoppers
 - Sandpit resource trolley
 - Den building fabrics, canes and pegs
 - Hula hoops and skipping ropes
 - Chalks
 - Dance equipment

Tidying Away





- If you hurt yourself, see a member of the Play Team.
- If you see any broken equipment, make a member of the Play Team aware straight away.
- If you feel upset or unsafe, there are lots of Play Team staff in blue hi-vis jackets.
- Wellies back in the correct welly stores - close the door behind you.

Things to Remember

