

ROBY PARK PRIMARY SCHOOL

WEEKLY NEWSLETTER

COMIC RELIEF

Next Friday, we will be supporting Comic Relief. Children can come to school dressed in red and white or Comic Relief merchandise. Since it is the 40th anniversary of Comic Relief, children also have the choice in dressing up in 80s attire should they wish to! We will be collecting £1 donations for the charity.

The Comic Relief logo, featuring the words "COMIC RELIEF" in white, bold, sans-serif capital letters on a red rectangular background.

EASTER HAMPERS

This week, envelopes with raffle tickets will be sent home. If you want to be in with a chance of winning an egg-cellent hamper of chocolate Easter goodies in time for the holidays, return your child's sealed envelope with strips of raffle tickets with your child's name and class on the back.



Inside the envelope should be £1 per strip (5 strips = £5). Don't forget to include your child's name on the envelope. Deadline for returning raffle tickets is **Tuesday 1st April**. Easter hamper raffle will take place on **Thursday 3rd April**. Good luck!

HUFFLEPUFF PRIZE AFTERNOON

In Autumn term, Hufflepuff were the winning house team each and every week. As a reward for their win, they have asked for an own clothes day and OPAL afternoon with ice creams.

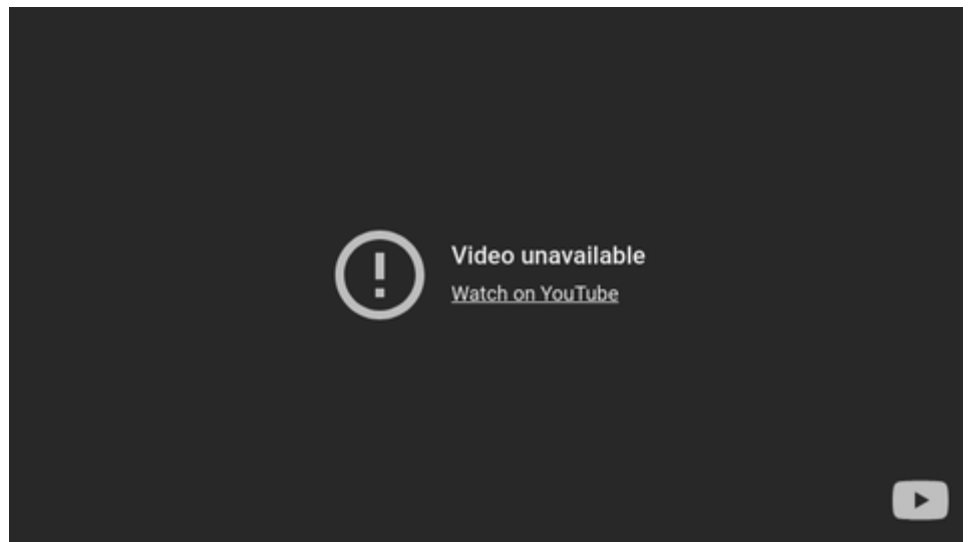
Therefore, their prize day will be on **Thursday**. Children can come to school in their own clothes and enjoy an afternoon of OPAL play. We will also organise for ice creams and lolly ices.

Well done Hufflepuff!



OPAL ADDITIONS

Children have loved playtimes exploring all of our new additions. The tractor tyres, hammocks, monkey bars, pull up bars and parallel bars have gone down a treat with the children!



MOTHER'S DAY CELEBRATION ASSEMBLIES

Our Mother's Day celebration assemblies are back on **Friday 28th March**.

Please check out the letter sent on Class Charts and that is available on the website for more information including timings as well as deadlines for emailing in photographs if you want them to be included.



Letter: <https://robyparkprimary.co.uk/wp-content/uploads/2025/03/3.3.25-Mothers-Day-Celebration-Assemblies.docx>

OPAL PARENT PLAY AFTERNOON

Come join us on **Monday** at 1.30pm, we will be hosting our next OPAL family play afternoon.

We look forward to welcoming families to Roby Park to enjoy an afternoon of play so our parents and carers can see all of our new play provision in place and experience our incredible play offer.

“Clothes can be washed or replaced. The memories and the fun they had will last forever.”



EASTER HOLIDAY CAMP BOOKING



Our Easter Holiday Camp is back! Easter Holiday Camp will run from Monday 7th April - Thursday 17th April. The club runs from 9am - 3pm. Children must be dropped off and collected by an adult from the Easton Road gate. To safeguard pupils, the gates will be closed from drop off at 9am so attendees must be punctual.

All children need to bring a packed lunch, bottle of water, break time snack and waterproof coat. Children will be engaging in a range of activities that will be mostly taking place outdoors so need to be dressed appropriately for the weather.

The cost of sessions is £12.50 per day. Days are non-transferrable and non-refundable. Booking is available now on Parent Pay. Please make sure you select your days at the point of booking.

Initially, camp is only open to YR-Y6 due to ratios but if there is availability, priority will be given to YN working parents/carers first.

OPAL CLASS BINGO



OPAL class bingo cards were sent home last week and we would **love** your pre-loved items you no longer use or want. If you're having a Spring clean or sort out, why not see what we need on our bingo cards and donate to school?

The classes that complete their bingo cards win an OPAL afternoon along with ice creams!

Please bring all donations into school on **Friday 21st March. Please do not send in before this date.** Thank you so much.

SUMMER UNIFORM

As the weather starts to get warmer, you may be considering Summer uniform. Pink gingham dresses (**no playsuits**) and grey shorts can be worn if children prefer.

Children should still wear their school shoes - no trainers, sandals or jelly shoes allowed. Thank you.

The uniform policy can be found here:

<https://robyparkprimary.co.uk/parent-information-2/uniform-shop/>



STARS OF THE WEEK

Use your camera to scan the QR code to see who our wonderful stars of the week are. We are proud of our children demonstrating our values of: collaboration, creativity, resilience, reflectiveness, being inquisitive and motivated.



ATTENDANCE RECOGNITION WINNERS

Y2 & Y5 were our attendance recognition winners this week and got the chance to move their class on our Classopoly board.

Mr Stansfield said, "Well done to Eryn for not giving up even though our maths was tricky this week."

Mr Swatman said, "Well done whole of Y2 for being a credit to Roby Park and showing fantastic manners and behaviour during our school trip to the Catalyst Museum. Well done, everyone."



#MISSSCHOOL #MISSOUT

Kaida Y5 said if she missed school, she would have missed her WW2 history lessons which she has enjoyed whilst Joel Y5 said he would have been disappointed to have missed out on the school trip to the Catalyst Museum.

REMARKABLE READERS



Well done to our remarkable readers this week. Children get to bring the remarkable reader bag home with a book, hot chocolate, bookmark and pencil.

Children also get to choose a book from our book vending machine.

Children can be selected as our remarkable reader winner by engaging in reading at home and in school. Who will win next week?



SPRING TERM 2 DATES

Dates are subject to change. Please keep an eye on Class Charts for any up to date information or amendments.

- 24.2.25 - Start of term @ 8.40am
- 24.2.25 - Fairtrade Fortnight
- 24.2.25 - Scholastic Book Fair - books on sale after school until 28.2.25
- 24.2.25 - Y1/2 Historic Workshop: Kings & Queens
- 24.2.25 - Young Voices Concert
- 28.2.25 - Our World, Our Future West End Workshop Y1-Y6
- 28.2.25 - YN & YR Forest School sessions
- 28.2.25 - Y2 Class Assembly @ 2.30pm
- 3.3.25 - Waste Week
- 3.3.25 - World Wildlife Day
- 5.3.25 - Spring Progress Meetings @ 3.15 - 7.30pm
- 6.3.25 - World Book Day
- 6.3.25 - Spring Progress Meetings @ 3.15 - 7.30pm
- 7.3.25 - Day of Unplugging
- 7.3.25 - International Women's Day
- 7.3.25 - Y1 & Y2 Forest School sessions
- 7.3.25 - Y1 Class Assembly @ 2.30pm
- 10.3.25 - British Science Week
- 12.3.25 - Y1-Y6 @ Catalyst Museum Workshops
- 13.3.25 - SEND Coffee Morning @ 9am
- 14.3.25 - Y3 & Y4 Forest School sessions
- 14.3.25 - YR Class Assembly @ 2.30pm
- 21.3.25 - Comic Relief
- 21.3.25 - Y5 & Y6 Forest School sessions
- 27.3.25 - Wellbeing Coffee Morning @ 9am
- 28.3.25 - Mothers' Day Celebration Assemblies
- 31.3.25 - Growing Up Week
- 31.3.25 - Y3-Y6 Tax Reduction Programme
- 31.3.25 - Y1-6 Chester Zoo Conservation Workshop #1
- 1.4.25 - Y1-6 Chester Zoo Conservation Workshop #2
- 2.4.25 - Y1-6 Chester Zoo Conservation Workshop #
- 3.4.25 - Easter Egg Hunt
- 3.4.25 - Easter Discos (EY 2-3pm, KS1 3-4pm, KS2 4.15-5.15pm)
- 4.4.25 - Whole school trip to Chester Zoo
- 4.4.25 - End of term @ 3pm

CONTACT DETAILS



If your contact details change at any time, please inform the office. It is important we can contact you in case of emergencies. We must have **TWO** emergency contacts per pupil.