

ROBY PARK PLAY ASSEMBLIES



PLAY CHARTER

We have the responsibility to make sure everyone enjoys playtime so we will:

BE KIND

- Share the resources
- Know how to play kindly
- Listen to each other



BE RESPECTFUL

- Make our own choices
- Look after each other, our school and equipment
- Treat everyone how we like to be treated



BE AWARE

- Try to sort out problems ourselves in a kind, understanding manner before seeking help.
- Make sure everyone is safe by managing risks
- Take responsibility for our play area and help tidy up



...HAVE FUN





15.4.24

- Children tidying up better, working together.
- Children and staff are happier.
- Children mixing well with children from other year groups.
- The playground has a positive

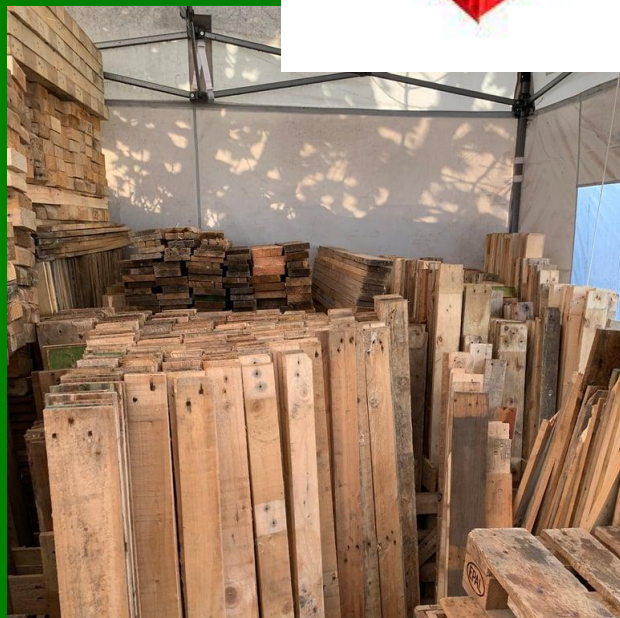


vibe
Celebrate





What is coming soon?



Inform





How can we use it?

**Building forts, house,
dens and structures,**

Build bridges

Build towers

Make mega-structures

Water play

Obstacle course

Balancing activities

How can we not use it?

**Towers no higher than
shoulder height on grass**

No throwing

No hitting

No snatching

**No inappropriate
references**

**Do not destroy others'
structures**

Do not climb towers

Innovate





What rules do we need to agree to when playing with....?

- A stack height limit of belly button on tarmac or shoulder height on soft grass.
- Avoid standing on a stack of crates over 1.0m off the ground on 1.5m max. on soft grass/mud.
- Only lift single crates above head height, not multiples of crates, to prevent head-bump hazard.
- Riding in dragged crates is fine on grass but beware of speed.
- Two people to carry – no dragging.
- Don't swing loose pieces around, don't throw

Negotiate





- When 'HAPPY' plays, we all tidy away together. We have 4 minutes to clear up!
- Everybody is responsible for tidying away all equipment whether you played with it or not.
- Reading books back in the Reading Shed and doors closed.
- All large loose parts back to their designated area.
- Scooters and bikes back to the fence lines.
- Role play items returned to the shed.
- Sandpit to be emptied of resources.
- Basketballs and footballs put back in bags inside the shed.

Tidying Away





- Items returned to their homes inside the large loose part store:
 - Tuff trays and stands
 - Small world trays with lids on
 - Constructa den building trolley
 - Sports equipment trolley – balls, parachutes and space hoppers
 - Sandpit resource trolley
 - Den building fabrics, canes and pegs
 - Hula hoops and skipping ropes
 - Chalks
 - Dance equipment

Tidying Away





- If you hurt yourself, see a member of the Play Team.
- If you see any broken equipment, make a member of the Play Team aware straight away.
- If you feel upset or unsafe, there are lots of Play Team staff in blue hi-vis jackets.
- Wellies back in the correct welly stores - close the door behind you.

Things to Remember

