



# Roby Park Primary School Newsletter

No. 18 Friday 28th June 2019

This week's news...

## SCHOOL UNIFORMS

	Foundation Stage	Y1 – Y6
Uniform	Burgundy school book bag with logo White polo shirt Burgundy school jumper/cardigan with logo Marl grey jogging bottoms Black Velcro trainers Black, grey or white socks Soft hair bobbles only – burgundy, black or white	Burgundy school book bag with logo White polo shirt Burgundy school jumper/cardigan with logo Grey trousers or skirt Black shoes Black, grey or white socks Soft hair bobbles only – Burgundy, black or white
PE Kit	Marl grey jogging bottoms White polo shirt Black shorts Velcro trainers	Marl grey jogging bottoms White polo shirt Black shorts Trainers

Please see the expectation for uniform for September. Children must return to school in full uniform. Children in Y1—6 must have black shoes and not trainers. **Trainers will not be allowed** other than on PE days or to change into for lunchtime. School jumpers, cardigans and book bags can be purchased from the office.

The new PE jogging bottoms can be purchased at affordable prices in supermarkets like Asda. Jogging bottoms must be plain marl grey.

## Attendance and Punctuality

Attendance for week commencing: 24.06.19							
Nursery	Reception	Year 1	Year 2	Year 3	Year 4	Year 5	Year 6
95%	93.3%	97%	92.8%	99.2%	94.1%	90.3%	95.2%

Punctuality for week commencing: 24.06.19							
Nursery	Reception	Year 1	Year 2	Year 3	Year 4	Year 5	Year 6
1	1	1	1	1	1	1	0

Well done as punctuality remains really positive. Nearly all children are coming to school on time so valuable learning time isn't lost.

Congratulations to Y3 for having the best attendance again, with a whopping 99.2%!! Y1 have been fabulous again with attendance of 97% and Nursery families are also working hard to get in to school everyday.

Children have lots to look forward in the next few weeks so please don't miss out!

### FIXED PENALTY NOTICES

Families with children with 8+ unauthorised absences, in a 10 week period, have received a fixed penalty notice warning letter. Any further unauthorised absences will result in a £120 fine from the Local Authority.

Where attendance continues to be a serious issue, and does not improve, can result in prosecution including £2500 fine, community order or custodial sentence. More information can be found at gov.uk.

## Sports Day

This year, whole school sports day will take place on Thursday 11th July. The EYFS and Key Stage 1 will take place in the morning and Key Stage 2 will take place in the afternoon. Letters will come home the beginning of next week with more details.



## Step Up Day



Letters will be coming home on Monday regarding staffing changes for the new academic year. We will sadly be saying goodbye to some of our much loved colleagues and a big hello to new members of the Roby Park team.

Children will spend the morning with their new class teacher on Friday 12th July.

## Inflation Park—Monday 1st July

On Monday, we have a giant inflatable assault course on the playground as part of our activity day for Key Stage 2.

We will open the assault course up to all children between 3—4pm. It will cost £1 for 2 plays on it.

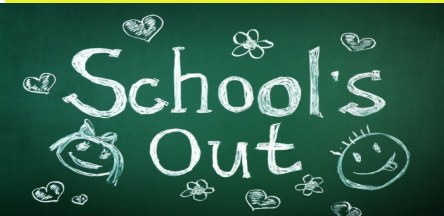
**All children in Y3—6 should come to school in their full PE kit for their activity day.**



## Cinderella Rockerfella Ticket Sales

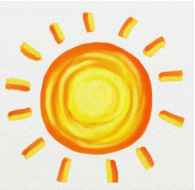
Cinderella Rockerfella tickets will go on sale from Monday 8th July. Tickets can be purchased from the office. Tickets cost £1 per adult and 50p per child. The performances are at 3.30pm and 6pm on Tuesday 16th July.

## Reports and Drop in Sessions



End of year reports will be coming home on 8th July. If you would like to speak to your child's class teacher regarding anything, we will be holding drop in sessions on Monday 15th July from 3.10pm.

## Sun Safety



We are finally due some lovely hot weather in the coming weeks. Please make sure your children bring a water bottle and hat to school to keep them safe in the sun. Also, please put "all day sun cream" on your child before they come to school, to protect them from burning

## School Nurse

SCH  L  
NURSE



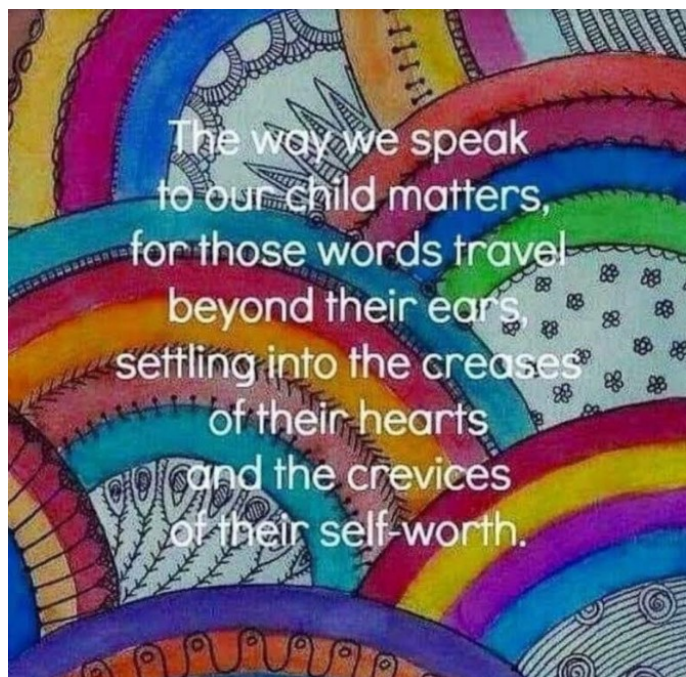
The school nurse will be available for parent drop ins on Thursday 11th July for any parents who want to discuss any issues regarding their children's health or wellbeing.

Please feel free to come and meet her and have a chat.

## Dates for your diary

Date	Event
1/7	KS2 Activity Fun Day
5/7	Y3 Class Assembly
8/7	Y1 End of Year Trip—Kidz Fantasy Land
9/7	Y2 End of Year Trip—Kidz Fantasy Land
10/7	EYFS End of Year Trip - Gulliver's World
11/7	Whole School Sports Day
12/7	Step Up Day
12/7	Y5 Class Assembly
16/7	Cinderella Rockerfella Performances @ 3.30pm and 6.00pm
18/7	Y6 Prom
19/7	Y6 Leavers' Assembly
19/7	Celebration Afternoon from 1.30pm onwards

## Quote of the week



***If your contact details change at any time please inform the office. It is important we can contact you in case of emergencies. We must have TWO emergency contacts per pupil.***

